

Randolph County

Chatham County

Lee County

Harnett County

Montgomery County

Moore County

Cumberland County

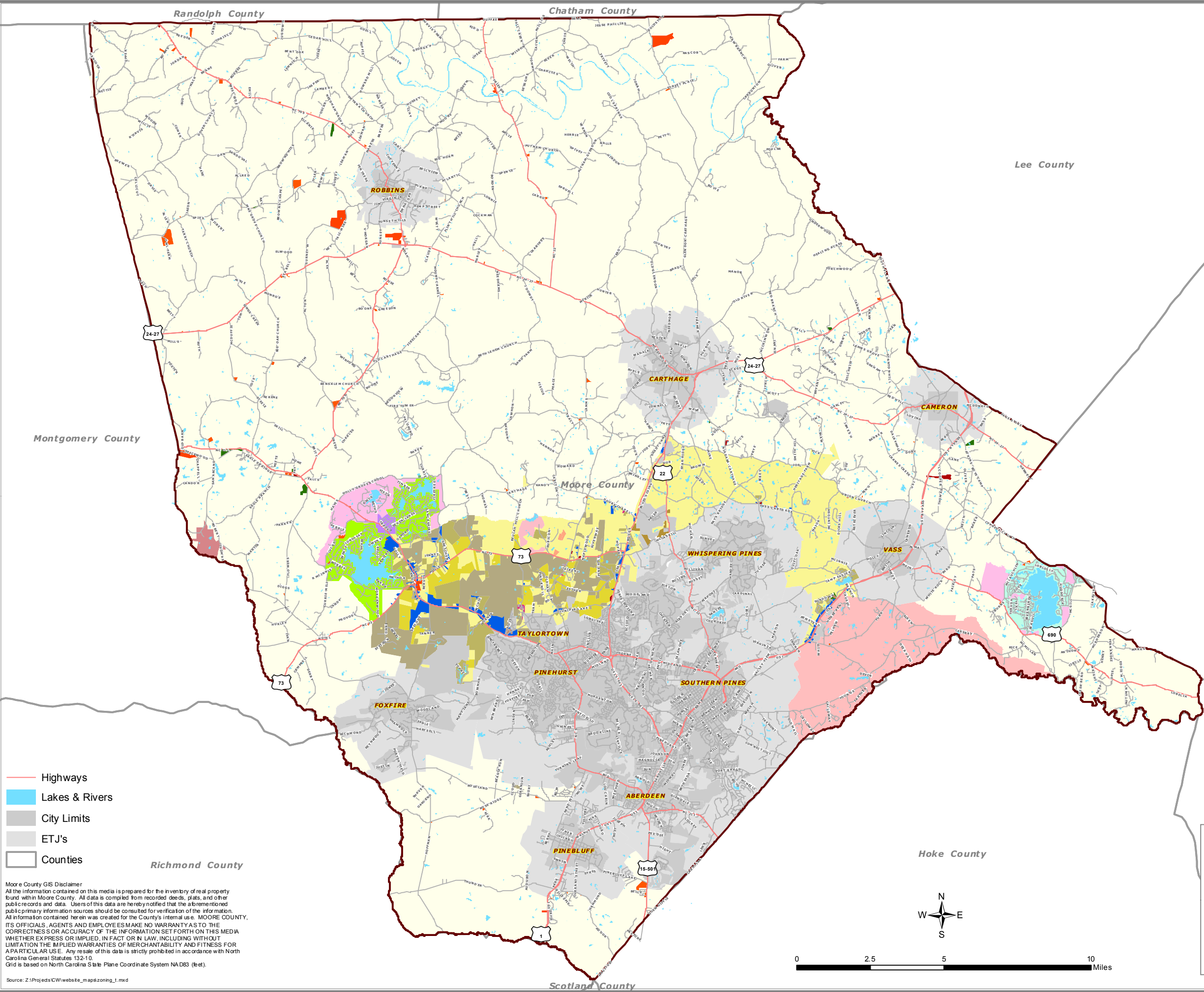
Richmond County

Hoke County

Scotland County

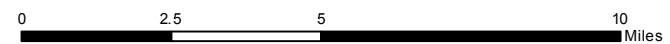
MOORE COUNTY ZONING

MAP PREPARED BY MOORE COUNTY GIS DEPARTMENT



- Highways
- Lakes & Rivers
- City Limits
- ETJ's
- Counties

Moore County Zoning		
RA	GC-SL	RA-CUD
RA-5	GC-WL	RA-2-CUD
RA-2	I-1	RA-USB
RA-40	I-2	RB
RA-30	O-P	RB-CUD
RA-20	P-C	RE
B-1	PUD/CUD	VB
B-2	R-MH	VB-CUD



Moore County GIS Disclaimer
 All the information contained on this media is prepared for the inventory of real property found within Moore County. All data is compiled from recorded deeds, plats, and other public records and data. Users of this data are hereby notified that the aforementioned public primary information sources should be consulted for verification of the information. All information contained herein was created for the County's internal use. MOORE COUNTY, ITS OFFICIALS, AGENTS AND EMPLOYEES MAKE NO WARRANTY AS TO THE CORRECTNESS OR ACCURACY OF THE INFORMATION SET FORTH ON THIS MEDIA WHETHER EXPRESS OR IMPLIED, IN FACT OR IN LAW, INCLUDING WITHOUT LIMITATION THE IMPLIED WARRANTIES OF MERCHANTABILITY AND FITNESS FOR A PARTICULAR USE. Any resale of this data is strictly prohibited in accordance with North Carolina General Statutes 132-10.
 Grid is based on North Carolina State Plane Coordinate System NAD83 (feet).

Source: Z:\Projects\CW\website_maps\zoning_1.mxd

DATE: 7 / 7 / 2011

